

# COUNTRYSIDE BITS AND BITES.....

By: County of Thorhild Agricultural Services

Phone: 780-398-3978



**LARDER BEETLE**  
Is a little pest that is commonly found in our homes especially in the kitchen pantry! These are commonly found as they are a clean-up bug!

## MEET THE LITTLE ONES THAT YOU MAY ENCOUNTER!



**HONEY BEES**  
The worker bee will not sting unless she believes that her or the colony is in danger. Wasp or yellow jacket stings are more common than honeybee stings.

Have you seen these on your spruce tree?



They are called **Eastern spruce gall adelgid**. While they may not kill your tree they will cause parts to turn brown.

The 2010 Alberta Grasshopper Forecast report is now available on the Ropin' the Web site.

**How many colonies of honey bees are there in Canada?**

Answer: Approx. 600,000

**Cutworms** are familiar pests to people who have experienced damage to their lawns, and to the stems of crops and seedlings. Plants are often cut off completely at or just below the soil surface giving the appearance of a freshly mowed area. They feed at night and when disturbed they curl up!



**Did you know...**  
All worker bees are female and have a normal lifespan of 45 days!



**FYI**  
While most bugs and insects identified within the County are plentiful they are not harmful!

**RESOURCES:**

Ropin' the Web  
[www.agric.gov.ab.ca](http://www.agric.gov.ab.ca)

Alberta Ag-Info Centre  
[www.agric.gov.ab.ca](http://www.agric.gov.ab.ca)  
1-866-882-7677

County of Thorhild  
[www.thorhildcounty.com](http://www.thorhildcounty.com)

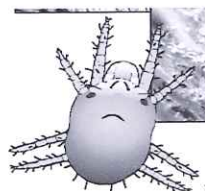
[www.billybee.com](http://www.billybee.com)

Natural Resources Canada  
[www.nrcan-rncan.gc.ca](http://www.nrcan-rncan.gc.ca)

a n b r p o n e e s e i b  
s e t i m e c u r p s n r  
e l r n s s s c h r e s r  
v l l n s o g t r u b e a  
i o n e c e e u s c e c n  
h p e h o n e y b e e t t  
k c e c n e d r a g k s s  
s c u t w o r m t a e l o  
o u q i e a d i g l e d a  
b e e k b d e a t l p m a  
w n a f l o w e r s e e e  
a t w o r k e r e d r a l  
e g y t s b o e e e b l p

- |           |             |              |
|-----------|-------------|--------------|
| adelgidae | ants        | beekeeper    |
| beetles   | bugs        | cutworm      |
| flowers   | garden      | hives        |
| honeybee  | insects     | kitchen      |
| larder    | pests       | pollen       |
| queen     | spruce gall | spruce mites |
| trees     | worker      |              |

**SPRUCE MITES** are not an insect, but considered to be an "insect relative" because it has 8 legs!



**What bug is this?**



This is a **Strawberry Root Weevil** and while it does not cause harm it is a nuisance because of the abundance of them. They cannot fly but can be found crawling on walls, floors, ceilings, and on items in the home.

The first sign of the spider mite's presence is a dusty substance on the needles, which turn brown and then drop off. Silk threads on the twigs are also indicative of a spruce spider mite infestation.

**Honey is the only food that has no expiration date!**